



Office: (936) 715-9488 • www.theflexstep.com

Email: theflexstep@yahoo.com

Patented Info®

#US8985276B2 / #US8960368B2 / #US8522921B2 / #US8540053B2 / #CA2720948

Will NOT Penetrate Liners





215 CR 2641
Garrison, TX 75946

Office #: 936-715-9488
Fax # : 936-715-9480

Email: theflexstep@yahoo.com
Website: www.theflexstep.com

FLEXSTEP Material Specs

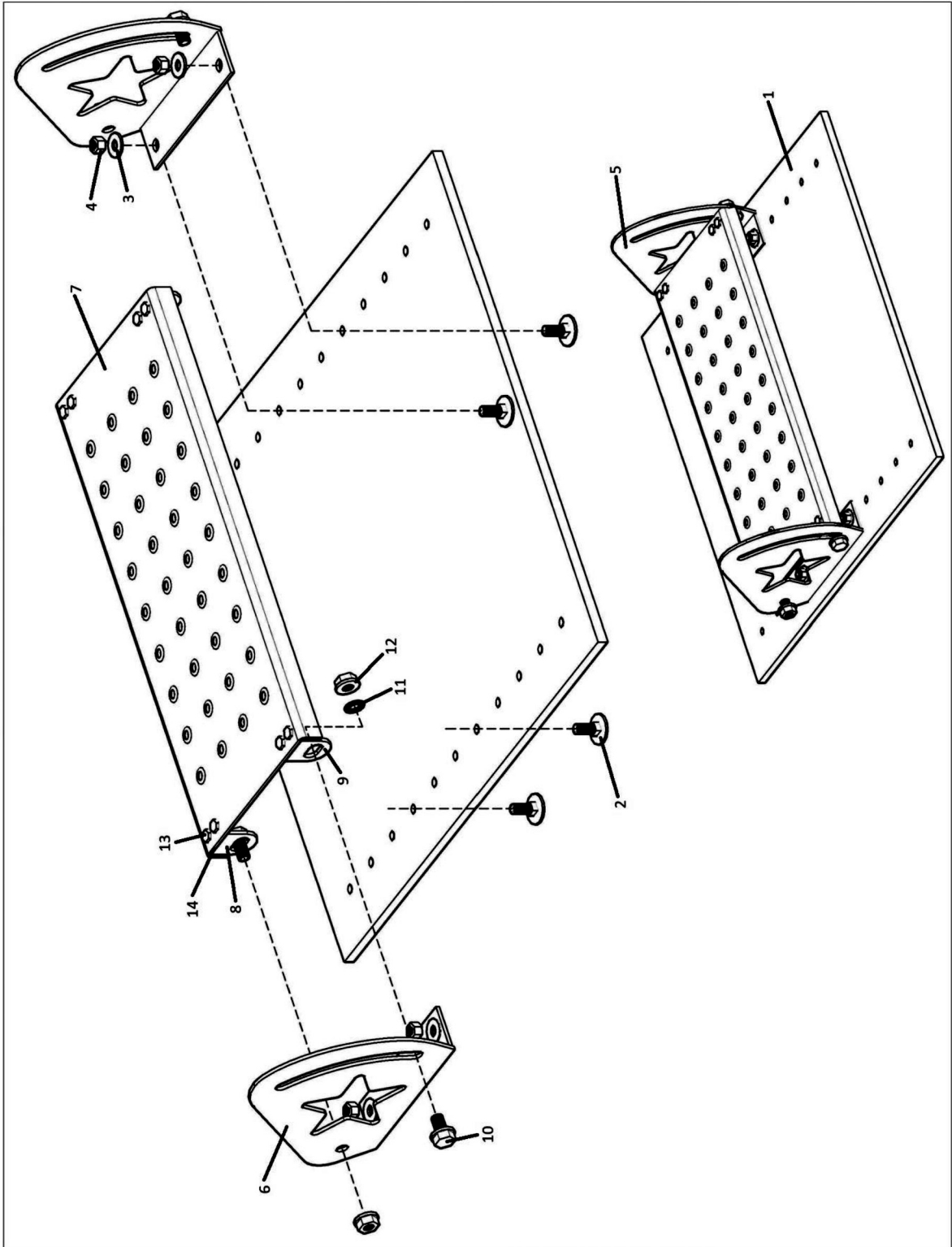
FLEXSTEP (™) as shown below, is a flexible, portable heavy duty stairway system designed for the Geosynthetic Liner construction market.



The system includes integrated handrails which qualifies the FLEXSTEP as OSHA compliant stairway system. This system is non-penetrating, it lays on the liner.
The FLEXSTEP is a patented system.

Material Parts A-E

A. (Belt and Bracket)

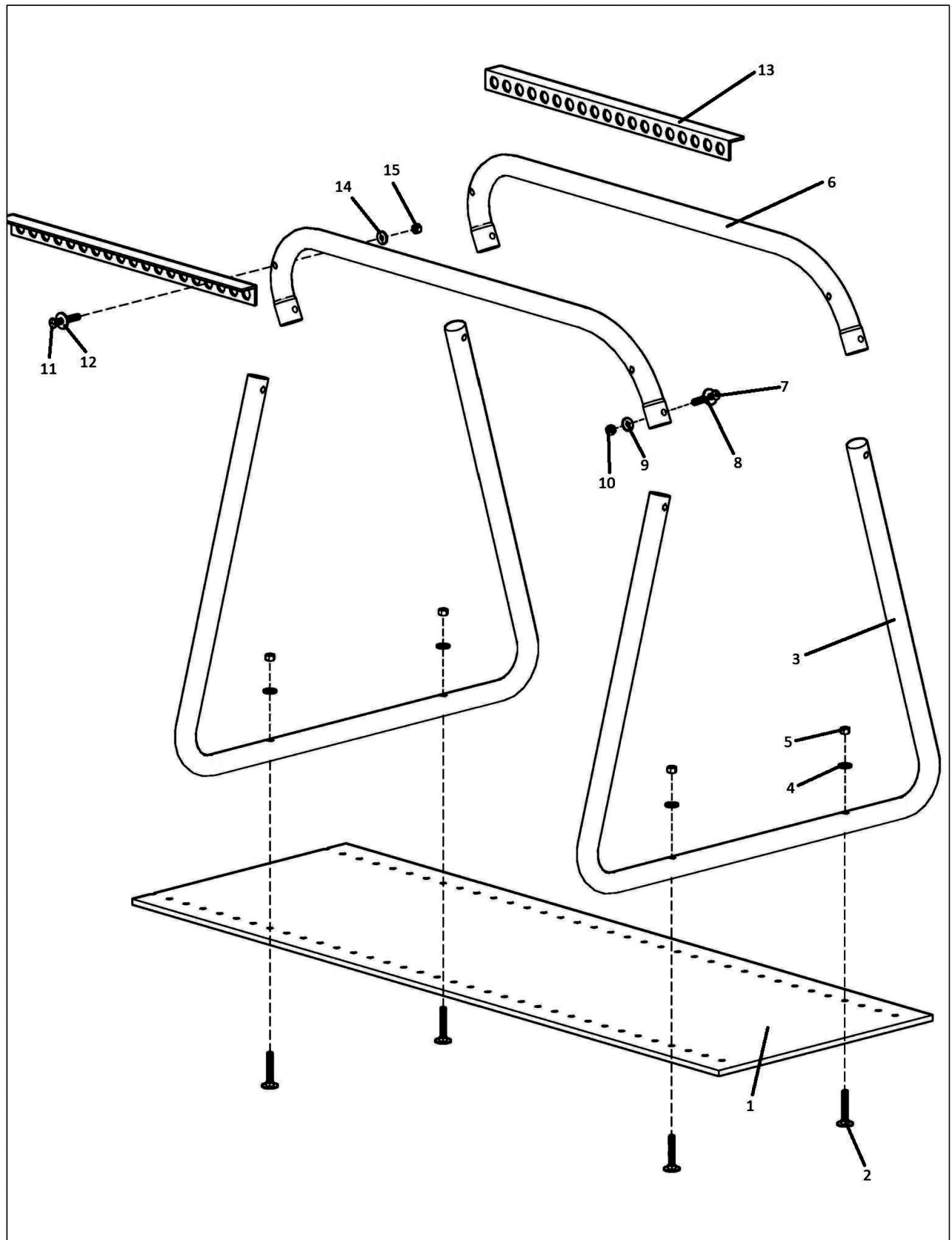


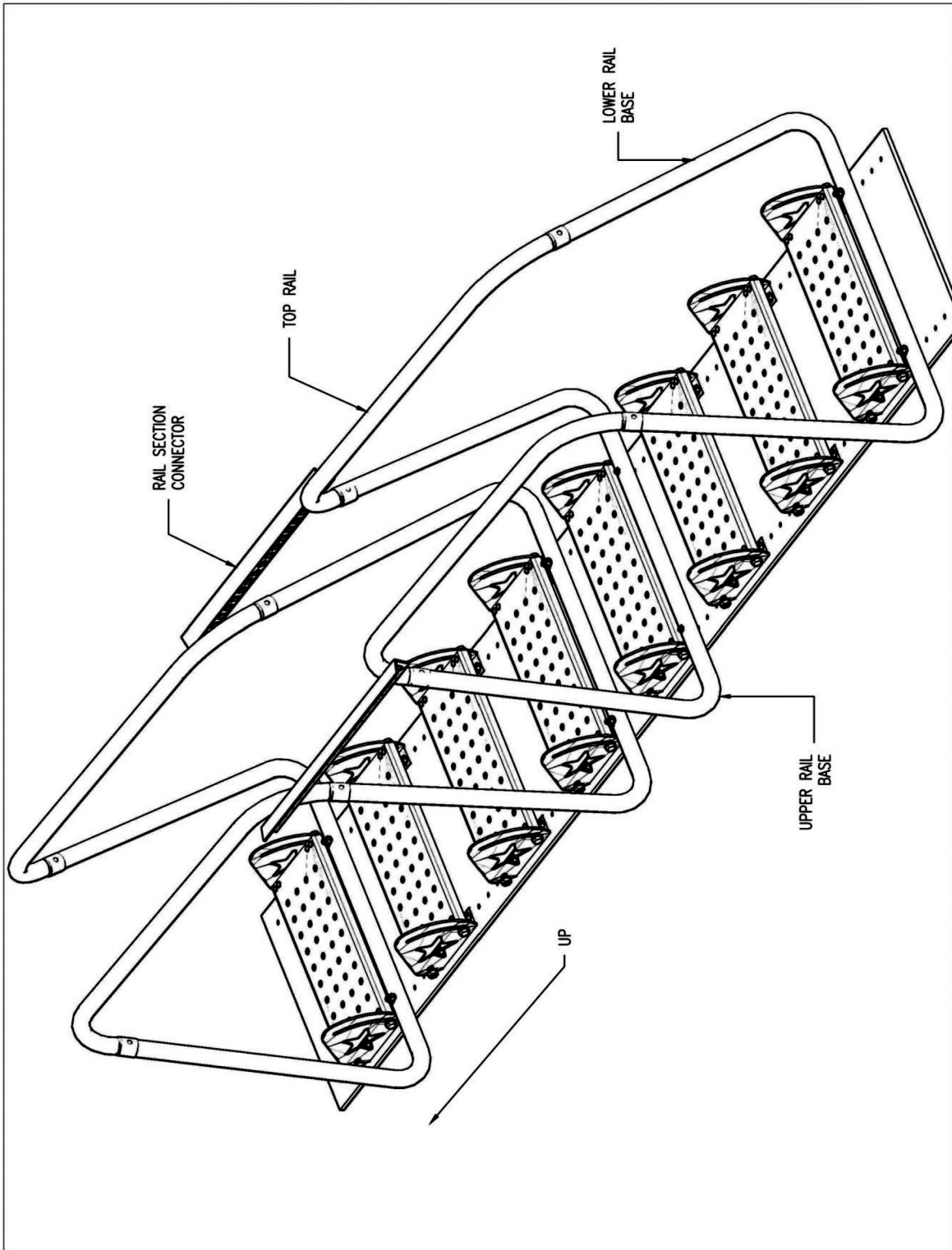
A-B (Belt & Bracket)

- 1) TFS-3001Stairway Base
3 Ply 330# 3/16 x 3/16 x 1/16" RMA Grade II
Middle Nylon Reinforce Carcus Belting
- 2) TFS-8125.....3/8" x 1-1/4" Elevator Bolt – Zinc Coated
- 3) TFS-8108..... 3/8" USS Flat washer – Zinc Coated
- 4) TFS-8107.....3/8" SAE Hex Nut – Zinc Coated
- 5) TFSTS-2110050R.....Right Angle Bracket – Galvanized
2-1/8" x 8-1/4" Adjustable 0-50 Degrees
- 6) TFSTS-2110050LLeft Angle Bracket – Galvanized
2-1/8" x 8-1/4" Adjustable 0-50 Degrees
- 7) TFSTS-220050.....9" x 22" Galvanized Adjustable Tex-Star Step 0-50 Degrees
(W/ 40 Punched Holes Which Leaves a "Boot Grip" Texture)
- 8) TFSTS-220575P.....MS-Step BRKT Welded Pivot Point Bracket
With Grade 5-1/2 x 1" Thread Bolt (Two On Each Step)
- 9) TFSTS-220575S.....MS-Step BRKT Welded Slot Adjustment Bracket
0-50 Degrees (Two On Each Step)
- 10) TFSTS-82051/2" x 7/8" SAE Serrated Flange Bolt – Zinc Coated
- 11) TFSTS-80005.....1/2" Internal Tooth Lock Washer
- 12) TFSTS-82201/2" x 3/4" SAE Serrated Flange Nut – Zinc Coated
- 13) TFSTS-220625Z.....1/4"-20 x 5/8" HH C/S GR5 Zinc (2 Each) Total 8
- 14) TFSTS-22025CNNE.....1/4"-20 Nylon Insert Locknut

Note: Right & left brackets use same number and types

Note: Per foot Weight 22 lbs.





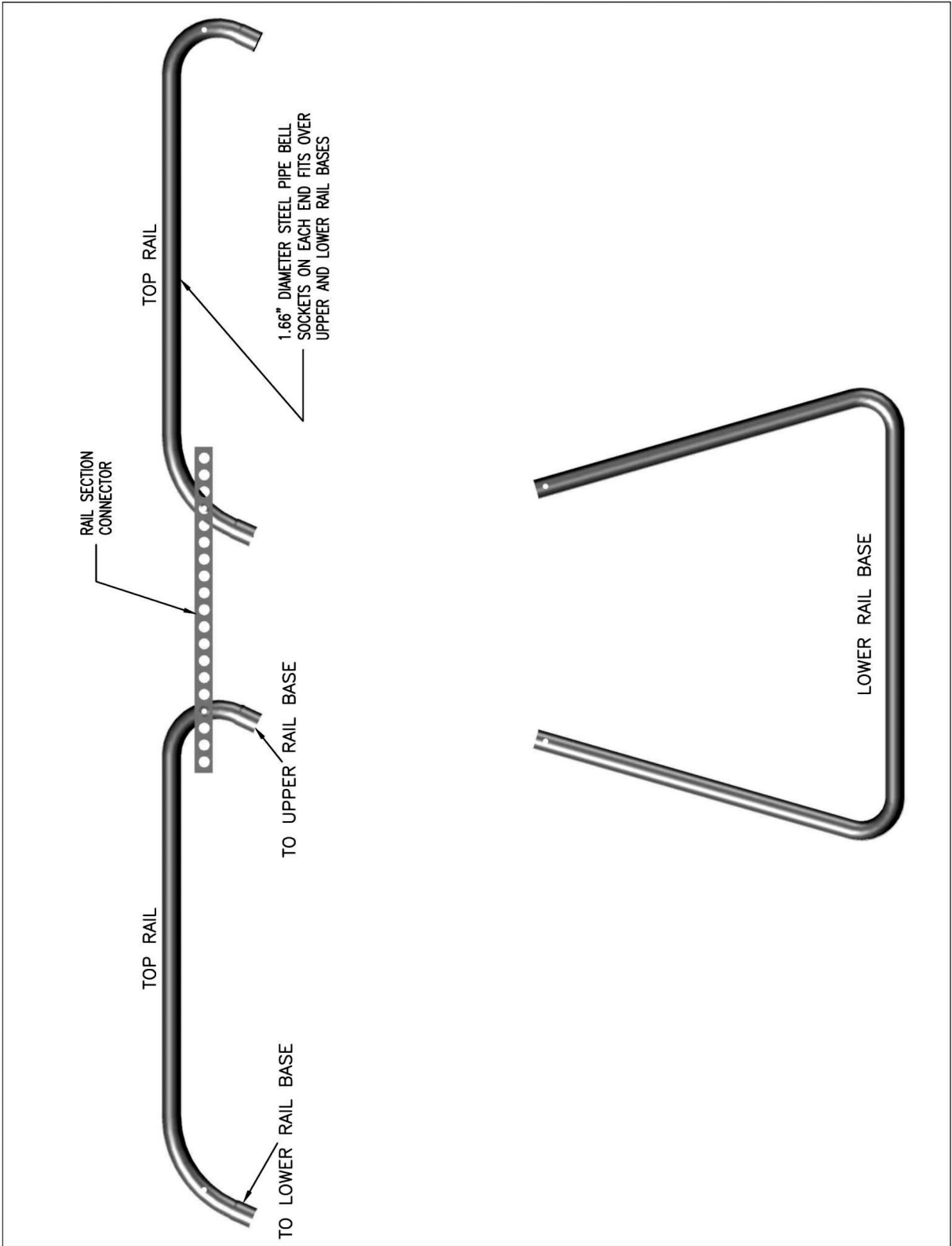
Product Info

Parts

- 1) TFS-3001 Stairway Base: 3 Ply 330# 3/16" x 3/16" x 1/16"
RMA GRD II Middle Nylon Reinforce Carcus
Weight per 16": 7.9 lbs.
- 2) 9" x 22" x 14" gauge stamped steel. 40 Boot-grip vertical perforations on tread. Galvanized
 - a) Bolted pivot bracket connection and welded pivot grade 5-1/2 thread bolt. Galvanized.
(2) One each side of step.
 - b) Bolted bracket slot adjustment 0-50. Galvanized.
(2) One each side of step.
- 3) (Left and right bracket, mirror image, galvanized)
2-1/8" x 8-1/4" adjustable 0-50 degrees. Weight 2 lbs.
Two of each one each side of step. Weight 10 lbs. total

Bolts/Nuts/Washers

- | | |
|---|-------------|
| 1/4"-20 x 5/8" HH C/S GR 5 Zinc Coated | (four each) |
| 1/4"-20 Nylon Insert Locknut | (four each) |
| a) 1/2" x 1" SAE Thread Bolt Zinc Coated | (two each) |
| b) 1/2" x 7/8" SAE Serrated Flange Bolt Zinc Coated | (two each) |
| c) 3/8" x 1-1/4" Elevator Bolts Zinc Coated | (two each) |
| d) 3/8" Washer Zinc Coated | (two each) |
| e) 3/8" x 1/2" SAE Nut Zinc Coated | (two each) |
| f) 1/2" Internal Tooth Lock Washer Zinc Coated | (two each) |
| g) 1/2" x 3/4" SAE Serrated Flange Nut Zinc Coated | (two each) |



- 4) One handrail system has two identical base sections and two identical handrails. Handrails are 1.66 inches in diameter and come in 4 nominal sizes : 32,48,64,80.

Bolts/Nuts/Washers

- a) Base section – 2 each 3/8" x 2-3/4" Elevator bolts (four each)
 - b) 3/8" Washer Zinc Coated (four each)
 - c) 3/8" x 1/2" SAE Nut Zinc Coated (four each)
 - d) 5/16"-18 x 2-1/4" Round Slot Mach Bolt Zinc Coated (four each)
 - e) 5/16" – 1-1/4" Fender Washer Zinc Coated (four each)
 - f) 5/16"-18 Nylon Insert Locknut Zinc Coated (four each)
- 5) Used to anchor the stairway system to prevent vertical movement. Can be used two ways, one with 24" stakes or cables connected to a dead man anchor point. 1 each required.

Bolts/Nuts/Washers

- a) 3/8" x 1-1/4" Elevator bolts 6 each – Total 14
 - b) 3/8" Washer Zinc Coated 6 each – Total 14
 - c) 3/8" x 1/2" SAE Nut Zinc Coated 6 each – Total 14
 - d) 5/8" x 24" Metal Stake 2 each – Total 2
 - e) Two cable sections with shackle,field fabricated(user furnished)
- 6) 1-1/2" x 1-1/2" x 25" Roll formed angle iron prime punched on 1" center handrail connector 2 each

Bolts/Nuts/Washers

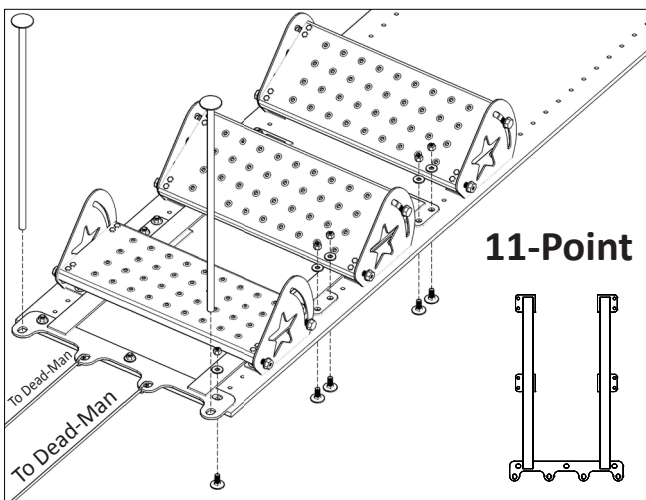
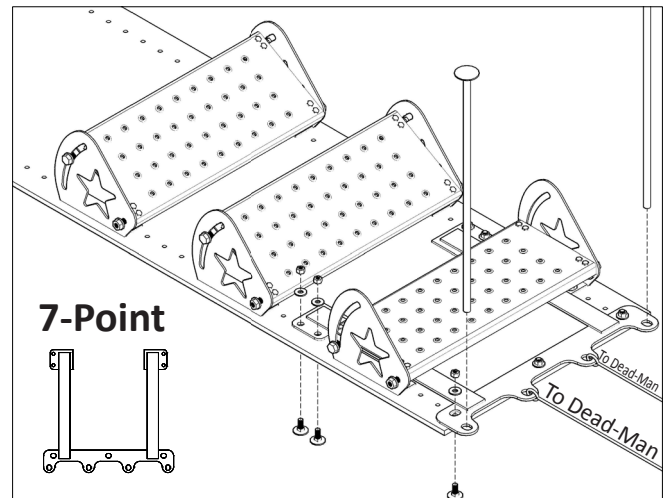
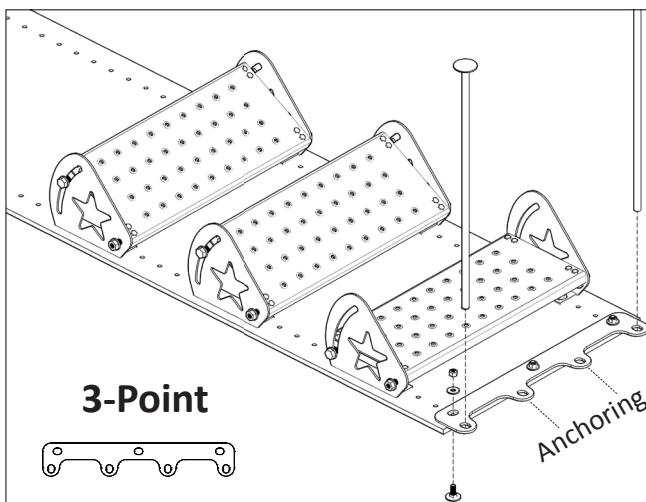
- a) 5/16" – 18 – 2-1/4" Round Slot Mach Bolt Zinc Coated
- b) 5/16" – 1-1/4" Fender Washer Zinc Coated
- c) 5/16" – 10 Nylon Insert Locknut

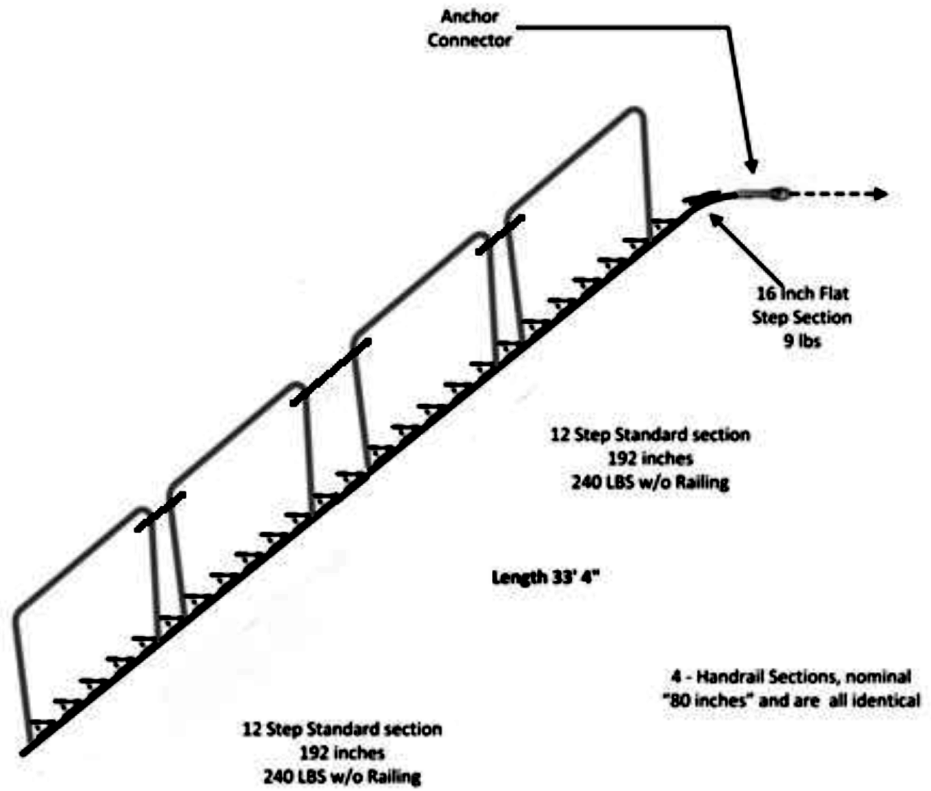
Component Parts A-E

E. (Anchor Bracket)

Field installations have several optional methods of **anchoring** the FLEXSTEP system at the top to prevent any vertical movement of the system.

Most basic anchoring systems use the standard Anchor Bracket. This bracket is bolted to the first series of belt holes and provides four holes thru which anchor pins can be driven (if the lining allows) or thru which cabling can be connected to attach to a “dead-man” anchor system beyond liner.



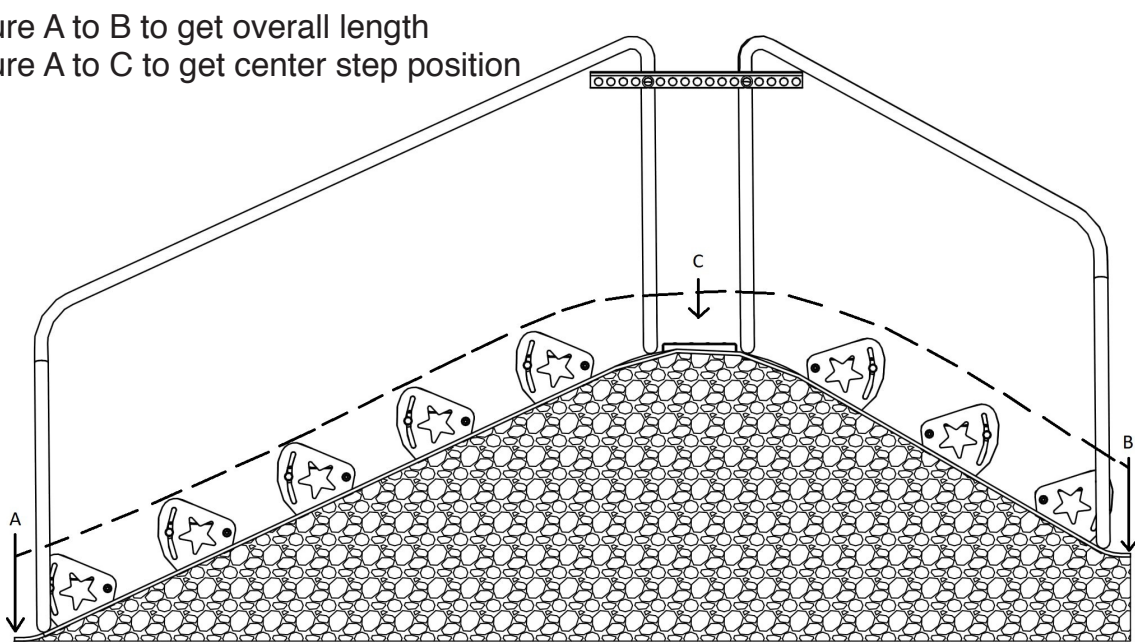


- | | |
|----------------------|--|
| 1) TFSANCHC-170CC | Top Standard Anchoring Connector Cable |
| 2) TFSANCHS-170CS | Top Anchoring Connector Small |
| 3) TFSANCHM-170CM | Middle Anchoring Connector |
| 4) TFSSTK24-16024STK | Large 5/8" x 24" Stakes |
| 5) TFSSTK12-16012STK | 6 Pack 3/8" x 12" Stakes |

Tips for Proper Installation

- 1) If needed, prepare area for stairway placement by smoothing surface
- 2) Loosening adjusters & hinge bolts for easier adjustment after installation
- 3) Place stairway where needed, adjust position accordingly to slopes. Secure base staking, deadman, etc.
- 4) Place handrails and adjust steps. Properly tighten adjuster & hinge bolts to 70 lbs. per foot of torque
- 5) Hand tools needed
 - a. For steps: (2) 3/4" wrenches, level, hammer & rake
 - b. Handrails: 9/16" wrench, 1/2" wrench & screwdriver
- 6) Stand back & admire

Measure A to B to get overall length
 Measure A to C to get center step position



Shipping & Delivery

Same day and next day shipping on most orders. All shipping required by The Flexstep based on a minimum of 3 quotes from major motor freight carriers for nationwide service.

Palletizes easily for shipping in multiples

Example:	Units	Length	Total Feet	Per ft. weight
	3	10'	30'	22 lbs

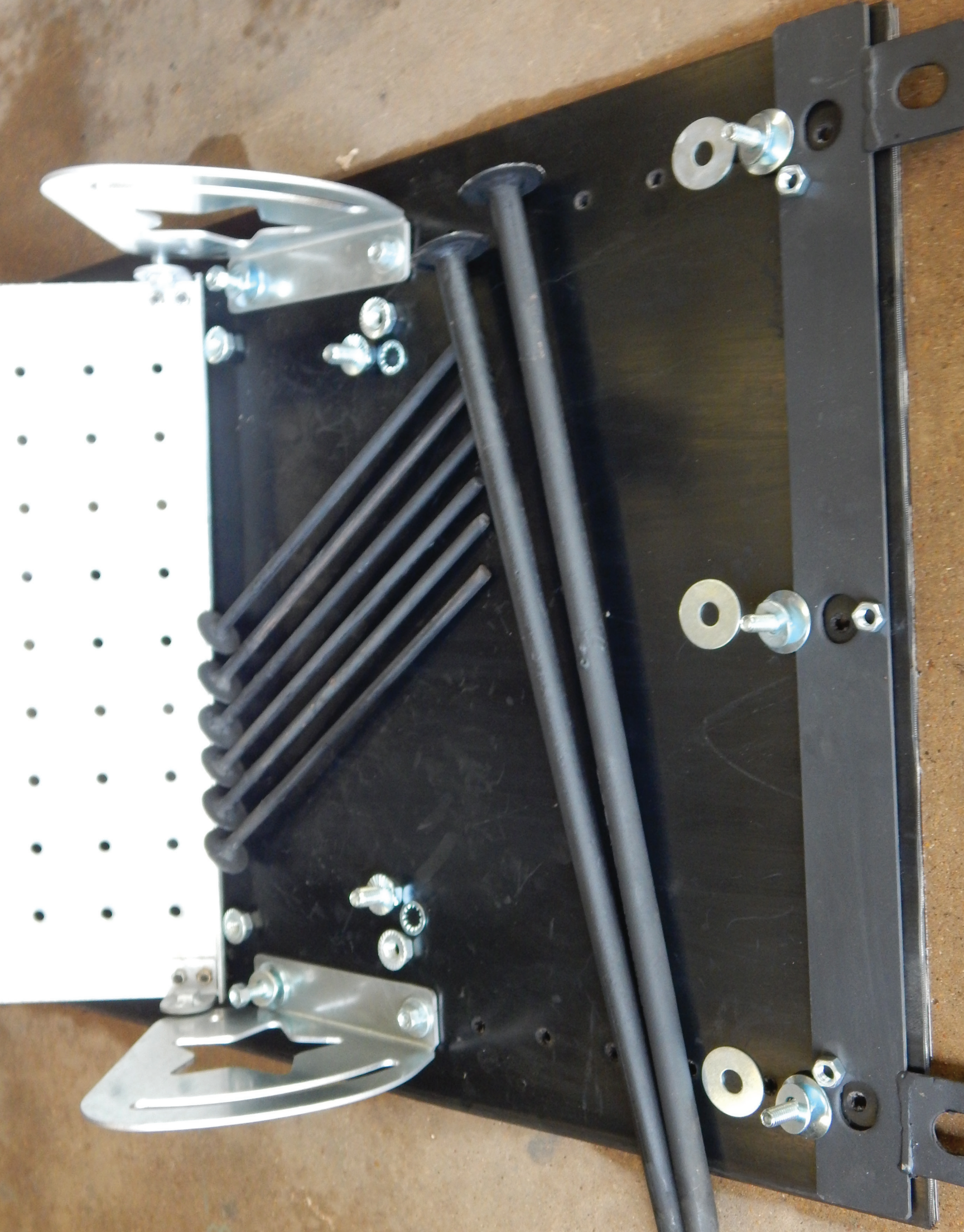
1 Pallet – 660 lbs

Information can be Emailed to: theflexstep@yahoo.com

And

Faxed to: (936)-715-9480

If not a supply company, Contact Us!



Adjust from 0-50° Slopes

